



Ngau Chi Wan Civic Centre – Cultural Activities Hall

FULL Technical Information

V. 2024.01.02

Page 1 of 4

Performing Arts Division – Technical Support Unit

Ngau Chi Wan Civic Centre

2/F & 3/F, Ngau Chi Wan
Municipal Services
Building,
11 Clear Water Bay Road,
Kowloon,
Hong Kong
Phone
852-2325 1970
Fax
852-2320 2684

CONTACTS

Zoe TANG

Senior Manager
(Kowloon East)
Direct Line
852- 2329 7735

Doris FUNG

Manager (NCWCC)
Direct Line
852- 2726 3576

Karen LAU

Resident Technical
Manager (Kowloon)
Direct Line
852- 2329 7135
Fax Line
852- 2320 2684

GENERAL SET-UP

The Cultural Activities Hall operates on a 'bare-walls' and 'Square One Lighting Rig' policy. That is, all changes to the installed equipment must be made and restored within the booking period. Check with our Technical Manager for any other equipment and technical enquiry.



The Ngau Chi Wan Civic Centre Cultural Activities Hall is a multi-purpose space that has been designed and equipped to provide a creative space with variable seating formats for arena, thrust, transverse or end stage layouts. Seating capacities range from 93 to 146 according to the chosen seating layout for drama, dance, concert, exhibition along with meetings and other community events.

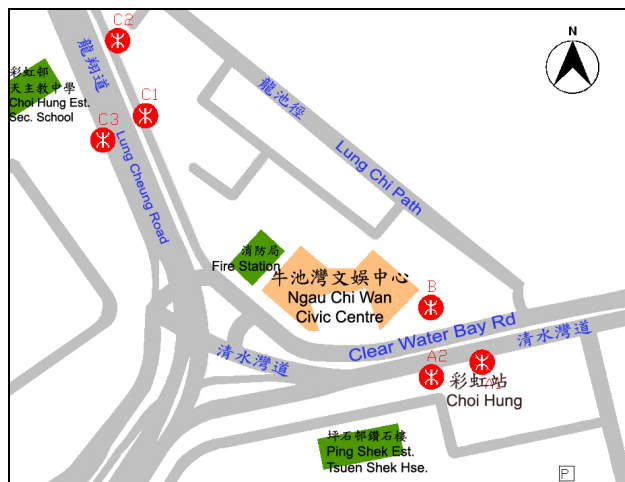
DIRECTIONS

MTR:

Kwun Tong Line, Choi Hung Station, Exit B

Freeway:

Choi Hung Interchange → Lung Cheung Road / Kwun Tong Road / Clear Water Bay Road / New Clear Water Bay Road



LOADING

Lift (Accessible only through the market):

2.10 x 1.73 x 2.25m
(W x D x H)

Door Dimension:

1.50 x 2.10m (W x H)

Loading Capacity: 1500kg

STAGE ENTRANCE

From Building Foyer by Passenger lift.

PARKING

Nil



AUDITORIUM



For performances, seating capacity varies from 93 to 146.

End stage	93 seats
Transverse stage	120 seats
Thrust stage	119 seats
Arena stage	146 seats

STAGE N.B. Dimensions are calculated allowing 0.40m clear space in front of all first rows.

Exhibition Space (Not totally clear – interrupted by four structural pillars)

Area	207.00m ²
Width	14.50m
Depth	14.30m

End Stage

Area	43.50m ²
Width	6.58m
Depth	6.61m

Transverse Stage (seating on opposite sides of the stage area)

Area	22.90m ²
Width	6.58m
Depth	3.48m

Thrust Stage (seating on three sides of the stage area)

Area	41.00m ²
Width	6.20m
Depth	6.61m

Arena Stage (seating on four sides, surrounding the stage area)

Area	21.50m ²
Width	6.20m
Depth	3.48m

HEIGHT

Clear under truss	4.90m
-------------------	-------

STAGE FLOOR

Flat – Black 6mm hardboard

CROSSOVER

Behind the black drapes

STORAGE AREA

Limited Space

RIGGING

Not available



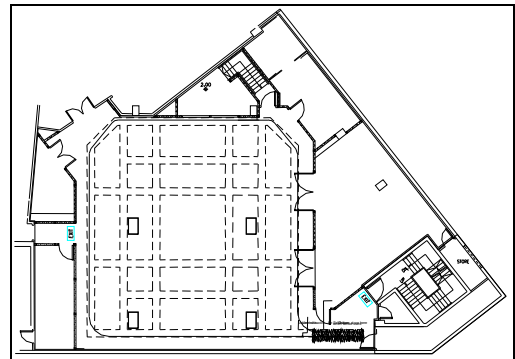
STAGE EQUIPMENT

Stage Drapery

Black masking legs on surround track under truss (fixed and not removed)	14	4.00 x 4.70m (WxH)
Legs (<i>upon request from Resident Stage Management</i>)	4	2.00 x 4.70m (WxH)
Music Stand	10	

Lift and Ladder

Aerial lift 1
operated by competent person & prior approved by venue management only.



DRESSING ROOM

Stage Level 1 for 6 people



Quick change area
(Black folding partition 4 pieces / set) 2 sets

***2 changing booth in dressing room**



RUNNING WARDROBE

Not available.
Irons & boards upon request from Resident Stage Management

LIGHTING

Dimmer	12 nos. of 2.5kW locating in Lighting Control Room			
Control Board	GrandMA3, with full backup control facilities, controllable of maximum 1024 circuits, located in Lighting Control Room. (ETC Ion as pooled lighting equipment)			
Houselight	Dimmer controlled. Controlled independently or via lighting control board.			
Circuit	12 x 2.5kW production lighting circuits, fixed wiring type, circuits are terminated to 15A socket outlets to UK standard respectively on the production lighting boxes, distributed at various locations throughout the Lighting truss overhead.			
LED Automated Lighting	Highend	SolaFrame 750	4	Fixed install on truss
	Fineart	FINE420L PERF	4	Fixed install on truss
	Chauvet Professional	Rogue R1 Beam Wash	23	4 Pool
Profile	750W	ETC	Source 4 25/50	6
Fresnel	575W	ETC	Source 4 Fresnel	6



Smoke generator		Look Solutions	Viper NT	1
Strobe Light	1500W	Anytronics	Deathstar	2
UV Light	120W	Wildfire	VioStorm VS-120	1
Other	High Stand		Doughty Shadow C Stand G200601	6
	Floor Stand		Kupo 355 Universal Floor Stand	8

The venue operates a Square One Lighting policy with a lighting rig designed to give all kinds of hirers a reasonable light coverage to meet their likely needs with minimum adjustment of colour of focus. Single hire sessions (4 hours) have two specials that can be focus only if their time and schedule permits. Hirers, who wish to re-colour, refocus and re-rig, may do so as long as the rig is returned to 'Square One' within the booking period.

Supply of above equipment subject to availability on receipt of a lighting plan.

Equipment availability does vary slightly according to equipment conditions and maintenance. Check with Technical Manager for any updates.

Hirer will be provided with basic lighting only, from available hung equipment, if technical preparation time is less than 2 hours in the booking.

All brought-in "Electrical and Stage Lighting Equipment" to be used in LCSD PA venues, shall meet the requirements of "Code of Practice for Electricity (Wiring) Regulations". Please contact the venue management for any electrical safety concern. Website reference:

https://www.emsd.gov.hk/en/electricity_safety/index.html

SOUND

Main Control Console	Soundcraft Si Performer mixing console with 16 input, 4 Auxiliary outputs (Max. 6 Mic/Line Channels are reserved for hirers)		
Microphone tie line	Microphone tie lines at stage		6 (total)
Loudspeaker	L-Acoustic 112P (Fixed install)		3
	L-Acoustic 108P (Fixed install)		2
Microphone	Shure Beta 58A		4
	Shure SM58		2
Wireless Microphone	Sennheiser SK 2000 Bodypack transmitter (with Sennheiser MKE 2-4-3-Gold Lavalier)		4
	Sennheiser SKM2000 Handheld transmitter (with Sennheiser MMD 945-1) Max. 4 units (extra charge incurred)		4
Stage Monitor	JBL EON Power 10		2
CD	Denon DN-C635		2
	Tascam SS-CDR200		2
Multimedia Laser Projector	Panasonic PT-RZ120B Laser Projector (12,000 lumens) (Fixed install)		1

COMMUNICATION

Single channel intercom system shared for all technical needs. Control room has communication system.

Prior to booking date, please confirm with Technical Manager for the availability of the equipment.

All required equipment will be set-up during the booking sessions; please allow adequate time for equipment set-up before performance or rehearsal